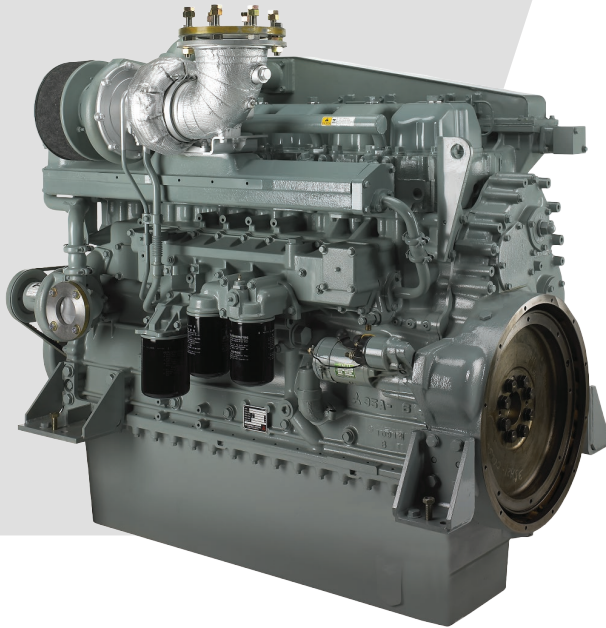


S6A3-Y1MPTA

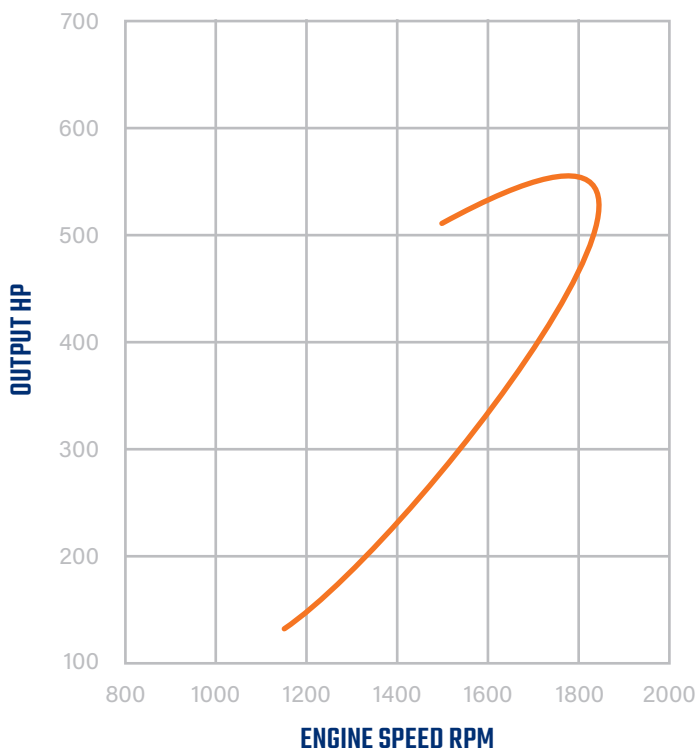


SA-SERIES



The S6A3-Y1MPTA engine is designed for durability, reliability, and efficiency.

Laborde Products is a proud distributor for Mitsubishi Marine Engines and is happy to provide the marine markets with a simple and fully mechanical engine. These engines were constructed with superior engineering to maintain the mechanical nature of its design and a commitment to keeping the power in the US mariners' hands, not the computers.



SPECIFICATIONS

OUTPUT 529 HP @ 1900 RPM

BORE/STROKE 5.91in x 6.89in
(150mm x 175mm)

DISPLACEMENT 18.5L
(1,133 cu in)

DIMENSIONS 64.41in (1,636mm) length
36.37in (924mm) width
53.98in (1,371mm) height

WEIGHT (DRY) 4,190lbs (1,900kg)

Information is subject to change without notice.



74257 Hwy 25
Covington, LA 70435
985-892-0107

313 Deerwood Glen Dr
Deer Park, TX 77536
281-247-8925

labordeproducts.com





	OUTPUT	BORE/ STROKE	DISPLACEMENT	WEIGHT (DRY)	EPA TIER
S6A3-Y1MPTA	483 HP @ 1840 RPM 529 HP @ 1900 RPM	5.91in x 6.89in (150mm x 175mm)	18.5L (1,133 cu in)	4,190lbs (1,900kg)	Tier 1
S6R-Y1MPTA	590 HP @ 1600 RPM	6.69in x 7.09in (170mm x 180mm)	24.5L (1,496 cu in)	6,240lbs (2,780kg)	Tier 1
S6R2-Y1MPTA	657 HP @ 1400 RPM	6.69in x 7.09in (170mm x 180mm)	29.96L (1,828 cu in)	6,395lbs (2,900kg)	Tier 1
S12A2-Y1MPTA	850 HP @ 1940 RPM	5.91in x 6.30in (150mm x 160mm)	33.93L (2,071 cu in)	7,951lbs (3,606kg)	Tier 1
S12R-Y1MPTA	1180 HP @ 1600 RPM	6.69in x 7.09in (170mm x 180mm)	49L (2,992 cu in)	11,731lbs (5,320kg)	Tier 1
S16R-Y1MPTA	1568 HP @ 1600 RPM	6.69in x 7.09in (170mm x 180mm)	65.4L (3,989 cu in)	14,950lbs (6,780kg)	Tier 1



74257 Hwy 25
Covington, LA 70435
985-892-0107

313 Deerwood Glen Dr
Deer Park, TX 77536
281-247-8925

labordeproducts.com

