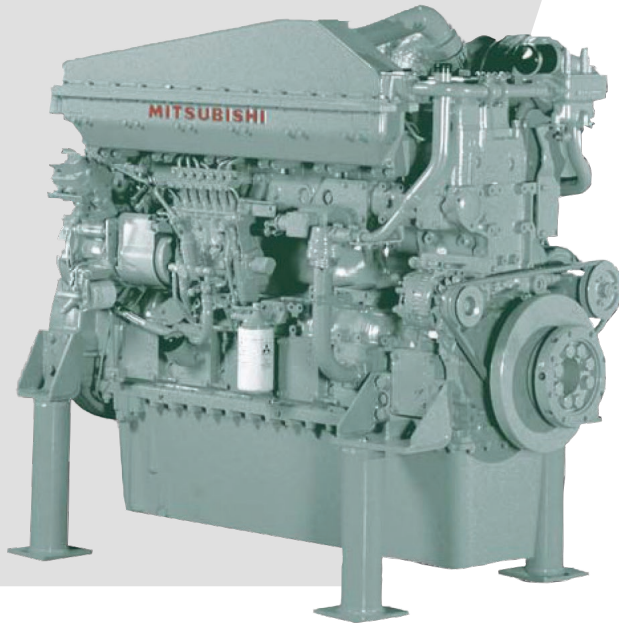


# S6B3-Y2MPTK-4



**SB-SERIES**

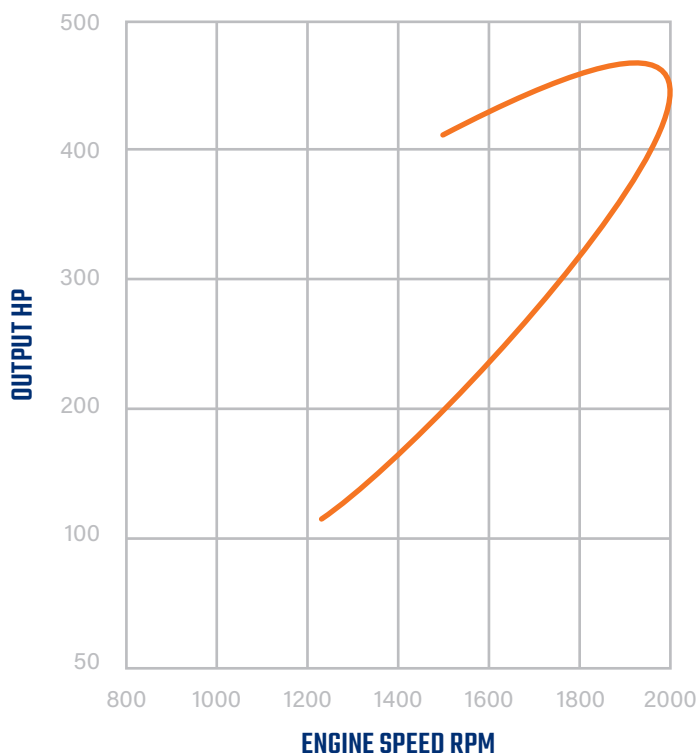


The S6B3-Y2MPTK-4 engine is designed for durability, reliability, and efficiency.

Mitsubishi has put together the ideal features for this engine. It is fully mechanical and EPA Tier 2 certified.

We didn't need to use complex electronics. We just used smart engineering to build a simple, powerful and easy-to-maintain engine.

This is the perfect engine for your tugboat, offshore and cargo vessel.



## SPECIFICATIONS

<b>OUTPUT</b>	429 HP @ 2000 RPM
<b>BORE/STROKE</b>	5.31in x 6.69in (135mm x 175mm)
<b>DISPLACEMENT</b>	14.6L (891 cu in)
<b>DIMENSIONS</b>	60.6in (1,539mm) length 40in (939mm) width 52.4in (1,330mm) height
<b>WEIGHT (DRY)</b>	2889lbs (1,310kg)

*Information is subject to change without notice.*



74257 Hwy 25  
Covington, LA 70435  
985-892-0107

313 Deerwood Glen Dr  
Deer Park, TX 77536  
281-247-8925

[labordeproducts.com](http://labordeproducts.com)





	<b>OUTPUT</b>	<b>BORE/ STROKE</b>	<b>DISPLACEMENT</b>	<b>WEIGHT (DRY)</b>	<b>EPA TIER</b>
<b>S6B3-Y2MPTK</b>	429 HP @ 2000 RPM	5.31in x 6.69in (135mm x 170mm)	14.6L (891 cu in)	2,889lbs (1,310kg)	Tier 2
<b>S6A3-Y2MPTK</b>	483 HP @ 1840 RPM	5.91in x 6.89in (150mm x 175mm)	18.6L (1,133 cu in)	4,190lbs (1,900kg)	Tier 2
<b>S6R-Y2MPTK</b>	630 HP @ 1600 RPM	6.69in x 7.09in (170mm x 180mm)	24.5L (1,496 cu in)	6,240lbs (2,780kg)	Tier 2
<b>S12A2-Y2MPTK</b>	940 HP @ 1940 RPM	5.91in x 6.30in (150mm x 160mm)	38.93L (2,071 cu in)	7,453lbs (3,380kg)	Tier 2
<b>S12R-Y2MPTK</b>	1260 HP @ 1600 RPM	6.69in x 7.09in (170mm x 180mm)	49L (2,992 cu in)	11,731lbs (5,320kg)	Tier 2



74257 Hwy 25  
Covington, LA 70435  
985-892-0107

313 Deerwood Glen Dr  
Deer Park, TX 77536  
281-247-8925

[labordeproducts.com](http://labordeproducts.com)

