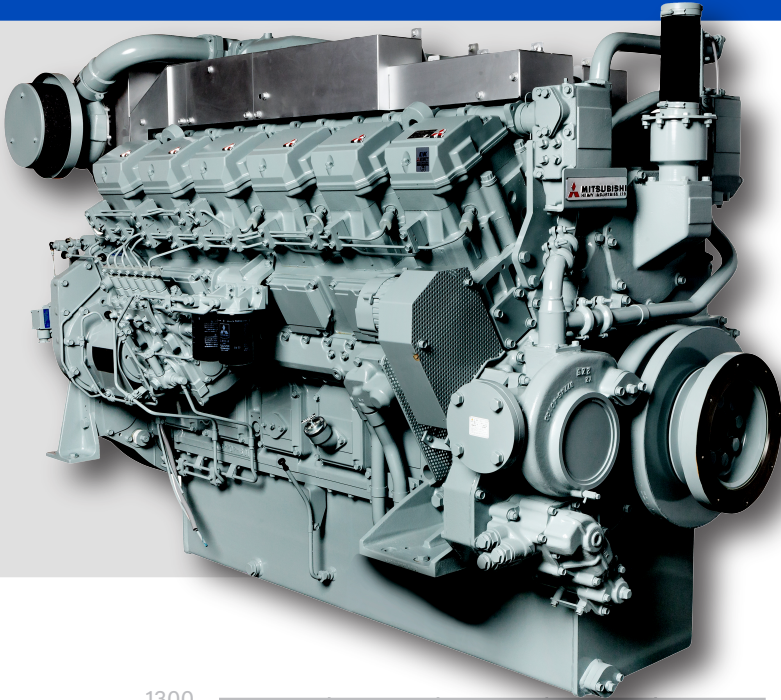


S12R-Y3MPTAW-4 (1100 HP)



SR-SERIES

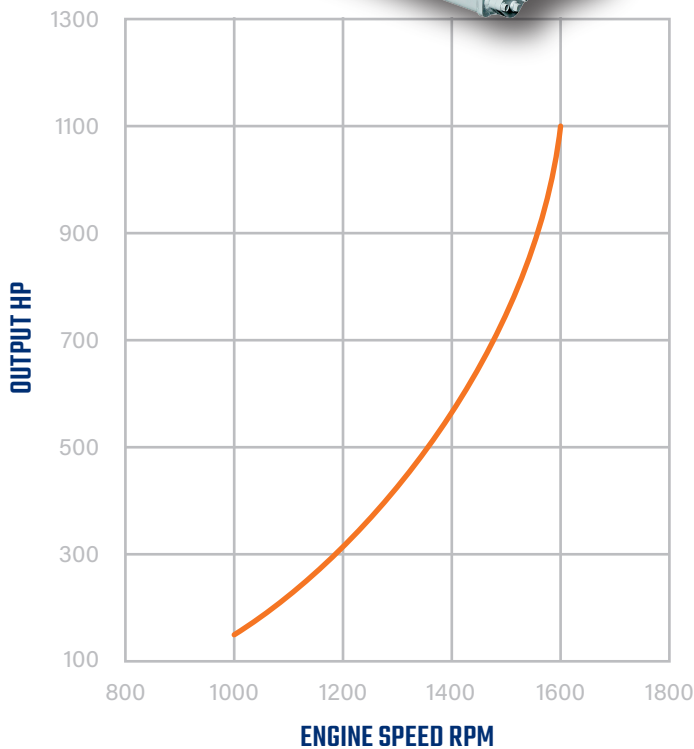


The S12R-Y3MPTAW-4 (1100 HP) engine is designed for durability and reliability.

Mitsubishi has put together the ideal features for its new engine. It is fully mechanical and EPA Tier 3 certified.

We didn't need to use complex electronics, we just used smart engineering to build a simple, powerful, and easy-to-maintain engine.

This is the perfect engine for your tugboat, offshore, or cargo vessel.



SPECIFICATIONS

OUTPUT	1100 HP @ 1600 RPM
BORE/STROKE	6.69in x 7.09in (170mm x 180mm)
DISPLACEMENT	49.036L (2,992 cu in)
DIMENSIONS	93.5in (2,946mm) length 60.0in (1,524mm) width 68.1in (2,032mm) height
WEIGHT (DRY)	11,731lbs (5,320kg)

Information is subject to change without notice.



74257 Hwy 25
Covington, LA 70435
985-892-0107

313 Deerwood Glen Dr
Deer Park, TX 77536
281-247-8925

labordeproducts.com





	OUTPUT	BORE/ STROKE	DISPLACEMENT	WEIGHT (DRY)	EPA TIER
S6B3-Y3MPTAW	429 HP @ 1940 RPM	5.31in x 6.69in (135mm x 170mm)	14.6L (891 cu in)	2,889lbs (1,310kg)	Tier 3
S6A3-Y3MPTK	543 HP @ 1840 RPM	5.91in x 6.89in (150mm x 175mm)	18.6L (1,133 cu in)	4,190lbs (1,900kg)	Tier 3
S6R-Y3MPTAW	630 HP @ 1600 RPM 684 HP @ 1800 RPM	6.69in x 7.09in (170mm x 180mm)	24.5L (1,496 cu in)	6,240lbs (2,780kg)	Tier 3
S6R2-Y3MPTAW	803 HP @ 1400 RPM	6.69in x 8.669in (170mm x 220mm)	29.96L (1,828 cu in)	6,527lbs (2,910kg)	Tier 3
S12R-Y3MPTAW	1100 HP @ 1600 RPM 1260 HP @ 1600 RPM	6.69in x 7.09in (170mm x 180mm)	49L (2,992 cu in)	11,731lbs (5,320kg)	Tier 3
S16R-Y3MPTAW	1675 HP @ 1600 RPM	6.69in x 7.09in (170mm x 180mm)	65.4L (3,989 cu in)	14,950lbs (6,780kg)	Tier 3



74257 Hwy 25
Covington, LA 70435
985-892-0107

313 Deerwood Glen Dr
Deer Park, TX 77536
281-247-8925

labordeproducts.com

