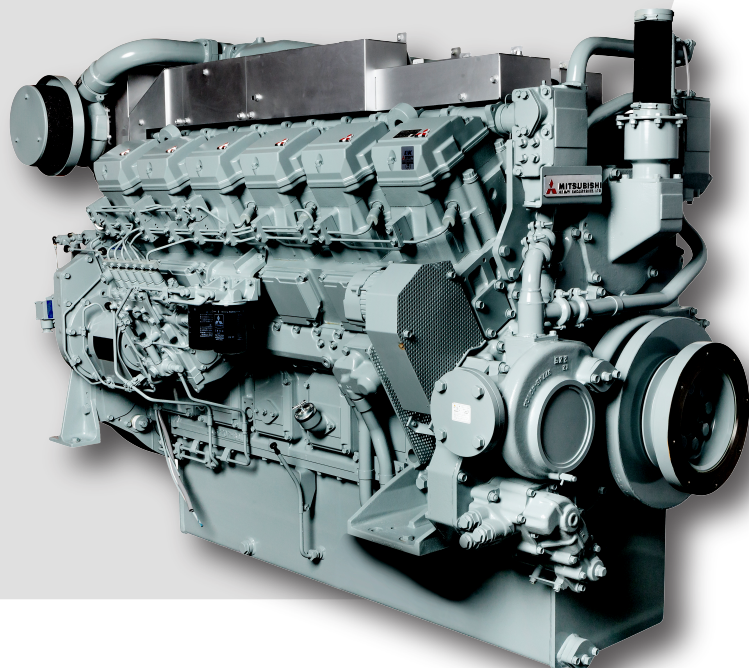


S12R-Y2MPTK-3

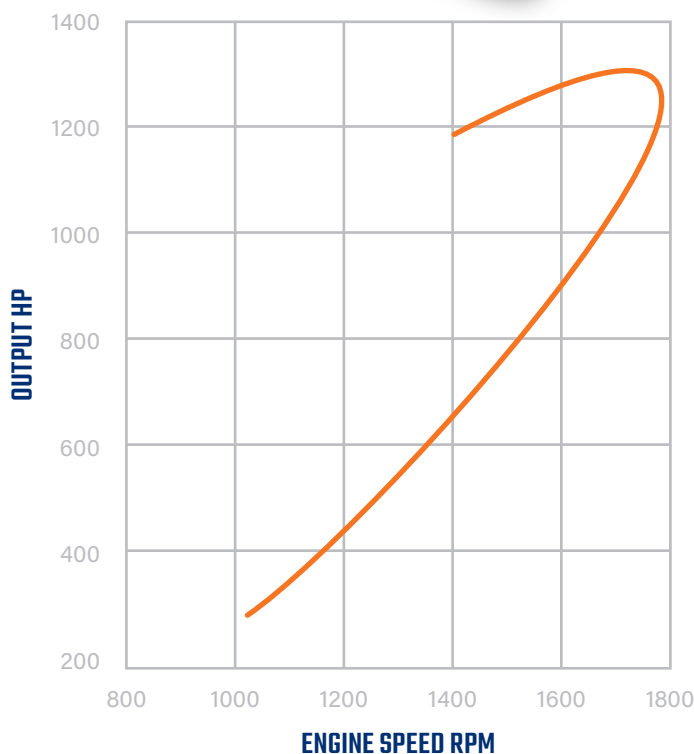


SR-SERIES



The S12R-Y2MPTK-3 engine is designed for durability, reliability, and efficiency.

Laborde Products is a proud distributor for Mitsubishi Marine Engines and is happy to provide the marine markets with a simple and fully mechanical engine. These engines were constructed with superior engineering to maintain the mechanical nature of its design and a commitment to keeping the power in the US mariners' hands, not the computers.



SPECIFICATIONS

OUTPUT	1260 HP @ 1600 RPM
BORE/STROKE	6.69in x 7.09in (170mm x 180mm)
DISPLACEMENT	49.0L (2,992 cu in)
DIMENSIONS	93.5in (2,376mm) length 60.0in (1,512mm) width 68.1in (1,731mm) height
WEIGHT (DRY)	11,731lbs (5,320kg)

Information is subject to change without notice.



74257 Hwy 25
Covington, LA 70435
985-892-0107

313 Deerwood Glen Dr
Deer Park, TX 77536
281-247-8925

labordeproducts.com





	OUTPUT	BORE/ STROKE	DISPLACEMENT	WEIGHT (DRY)	EPA TIER
S6B3-Y2MPTK	429 HP @ 2000 RPM	5.31in x 6.69in (135mm x 170mm)	14.6L (891 cu in)	2,889lbs (1,310kg)	Tier 2
S6A3-Y2MPTK	483 HP @ 1840 RPM	5.91in x 6.89in (150mm x 175mm)	18.6L (1,133 cu in)	4,190lbs (1,900kg)	Tier 2
S6R-Y2MPTK	630 HP @ 1600 RPM	6.69in x 7.09in (170mm x 180mm)	24.5L (1,496 cu in)	6,240lbs (2,780kg)	Tier 2
S12A2-Y2MPTK	940 HP @ 1940 RPM	5.91in x 6.30in (150mm x 160mm)	33.93L (2,071 cu in)	7,453lbs (3,380kg)	Tier 2
S12R-Y2MPTK	1260 HP @ 1600 RPM	6.69in x 7.09in (170mm x 180mm)	49L (2,992 cu in)	11,731lbs (5,320kg)	Tier 2



74257 Hwy 25
Covington, LA 70435
985-892-0107

313 Deerwood Glen Dr
Deer Park, TX 77536
281-247-8925

labordeproducts.com

