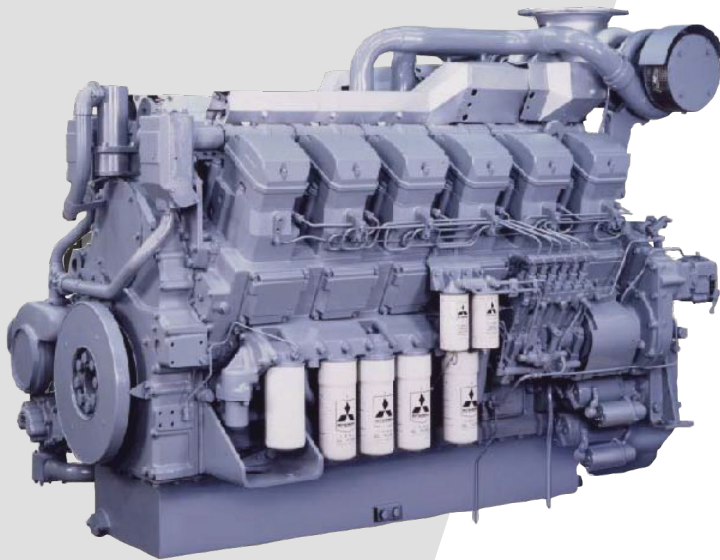


S12A2-Y2MPTK-3



SB-SERIES

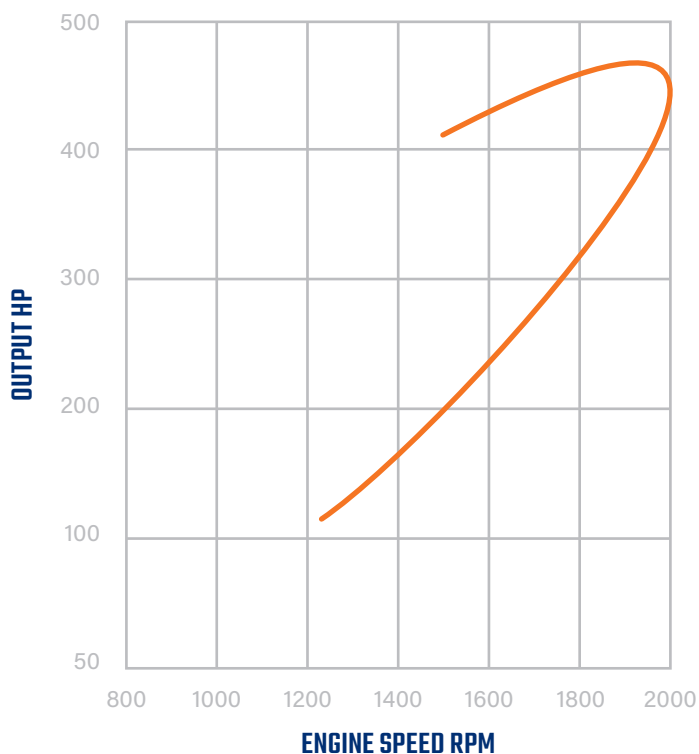


The S12A2-Y2MPTK-3 engine is designed for durability, reliability, and efficiency.

Mitsubishi has put together the ideal features for this engine. It is fully mechanical and EPA Tier 2 certified.

We didn't need to use complex electronics. We just used smart engineering to build a simple, powerful and easy-to-maintain engine.

This is the perfect engine for your tugboat, offshore and cargo vessel.



SPECIFICATIONS

OUTPUT	940 HP @ 1940 RPM
BORE/STROKE	5.91in x 6.30in (150mm x 160mm)
DISPLACEMENT	33.93L (891 cu in)
DIMENSIONS	90.16in (2,290mm) length 56.54in (1,436mm) width 63.72in (1,618.5mm) height
WEIGHT (DRY)	7,453lbs (3,380kg)

Information is subject to change without notice.



74257 Hwy 25
Covington, LA 70435
985-892-0107

313 Deerwood Glen Dr
Deer Park, TX 77536
281-247-8925

labordeproducts.com





	OUTPUT	BORE/ STROKE	DISPLACEMENT	WEIGHT (DRY)	EPA TIER
S6B3-Y2MPTK	429 HP @ 1940 RPM	5.31in x 6.69in (135mm x 170mm)	14.6L (891 cu in)	2,889lbs (1,310kg)	Tier 2
S6A3-Y2MPTK	483 HP @ 1840 RPM	5.91in x 6.89in (150mm x 175mm)	18.6L (1,133 cu in)	4,190lbs (1,900kg)	Tier 2
S6R-Y2MPTK	630 HP @ 1600 RPM	6.69in x 7.09in (170mm x 180mm)	24.5L (1,496 cu in)	6,240lbs (2,780kg)	Tier 2
S12A2-Y2MPTK	940 HP @ 1940 RPM	5.91in x 6.30in (150mm x 160mm)	38.93L (2,071 cu in)	7,453lbs (3,380kg)	Tier 2
S12R-Y2MPTK	1260 HP @ 1600 RPM	6.69in x 7.09in (170mm x 180mm)	49L (2,992 cu in)	11,731lbs (5,320kg)	Tier 2



74257 Hwy 25
Covington, LA 70435
985-892-0107

313 Deerwood Glen Dr
Deer Park, TX 77536
281-247-8925

labordeproducts.com

