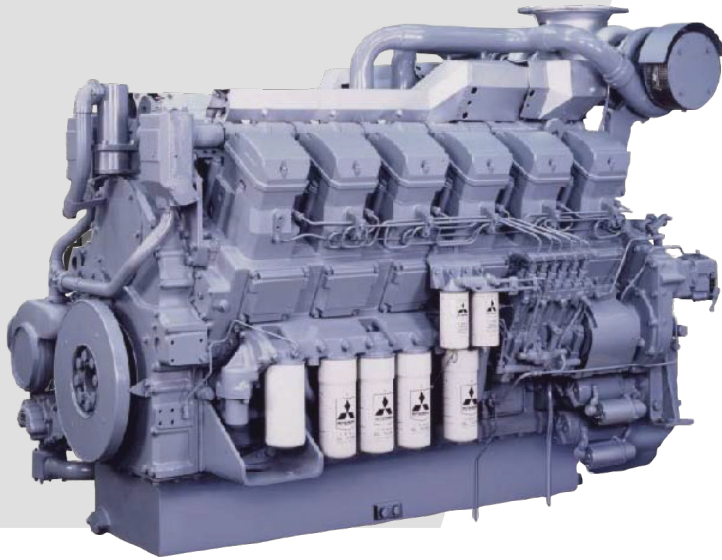


# S12A2-Y1MPTA

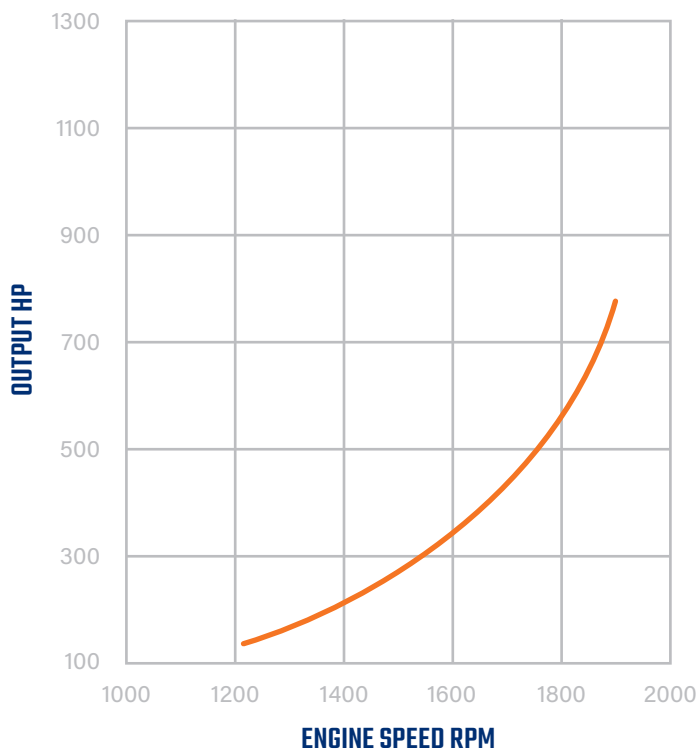


**SA-SERIES**



The S12A2-Y1MPTA engine is designed for durability and reliability.

Laborde Products is a proud distributor for Mitsubishi Marine Engines and is happy to provide the marine markets with a simple and fully mechanical engine. These engines were constructed with superior engineering to maintain the mechanical nature of its design and a commitment to keeping the power in the US mariners' hands, not the computers.



## SPECIFICATIONS

<b>OUTPUT</b>	850 HP @ 1940 RPM
<b>BORE/STROKE</b>	5.91in x 6.30in (150mm x 160mm)
<b>DISPLACEMENT</b>	33.93L (2,071 cu in)
<b>DIMENSIONS</b>	90.16in (2,290) length 56.54in (1,436) width 63.72in (1,618.5) height
<b>WEIGHT (DRY)</b>	7,951lbs (3,606kg)

*Information is subject to change without notice.*



74257 Hwy 25  
Covington, LA 70435  
985-892-0107

313 Deerwood Glen Dr  
Deer Park, TX 77536  
281-247-8925

[labordeproducts.com](http://labordeproducts.com)





**OUTPUT**

**BORE/  
STROKE**

**DISPLACEMENT**

**WEIGHT  
(DRY)**

**EPA  
TIER**

<b>S6A3-Y1MPTA</b>	483 HP @ 1840 RPM  529 HP @ 1900 RPM	5.91in x 6.89in (150mm x 175mm)	18.5L (1,133 cu in)	4,190lbs (1,900kg)	Tier 1
<b>S6R-Y1MPTA</b>	590 HP @ 1600 RPM	6.69in x 7.09in (170mm x 180mm)	24.5L (1,496 cu in)	6,240lbs (2,780kg)	Tier 1
<b>S6R2-Y1MPTA</b>	657 HP @ 1400 RPM	6.69in x 7.09in (170mm x 180mm)	29.96L (1,828 cu in)	6,395lbs (2,900kg)	Tier 1
<b>S12A2-Y1MPTA</b>	850 HP @ 1940 RPM	5.91in x 6.30in (150mm x 160mm)	33.93L (2,071 cu in)	7,951lbs (3,606kg)	Tier 1
<b>S12R-Y1MPTA</b>	1180 HP @ 1600 RPM	6.69in x 7.09in (170mm x 180mm)	49L (2,992 cu in)	11,731lbs (5,320kg)	Tier 1
<b>S16R-Y1MPTA</b>	1568 HP @ 1600 RPM	6.69in x 7.09in (170mm x 180mm)	65.4L (3,989 cu in)	14,950lbs (6,780kg)	Tier 1



74257 Hwy 25  
Covington, LA 70435  
985-892-0107

313 Deerwood Glen Dr  
Deer Park, TX 77536  
281-247-8925

[labordeproducts.com](http://labordeproducts.com)

