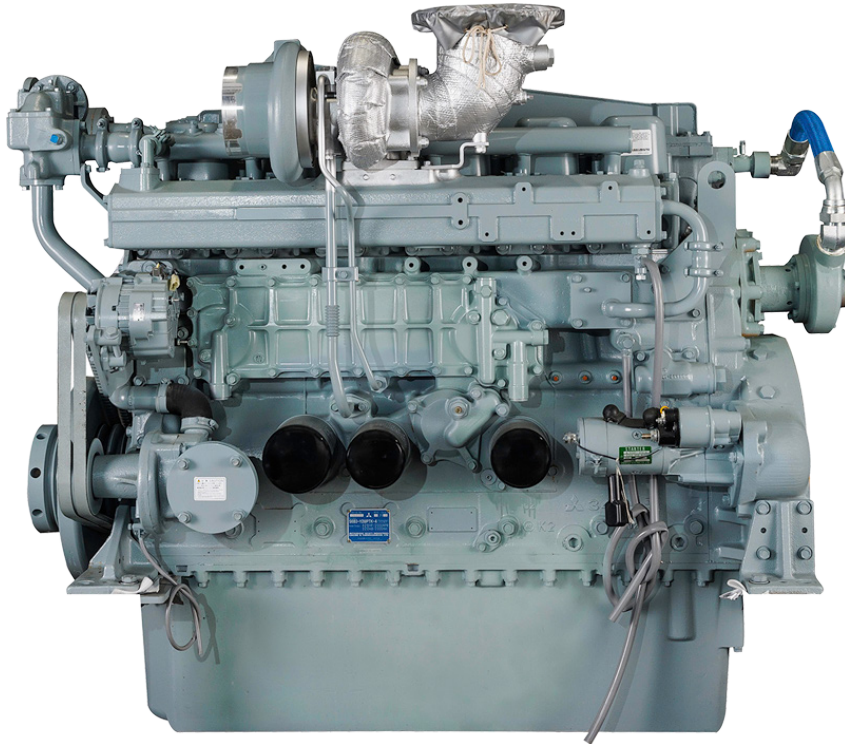


S6B3 SERIES



6-cylinder, 4-cycle, mechanical controlled, water cooled, turbocharged, direct injection diesel engine

BORE/STROKE 5.3in x 6.7in
(135mm x 170mm)

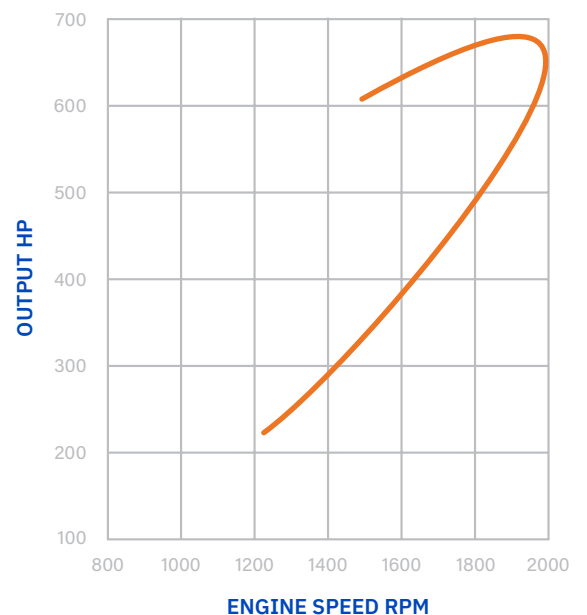
DISPLACEMENT 14.6L
(891 cu in)

DIMENSIONS 61in (1,539mm) length
37in (939mm) width
52in (1,330mm) height

WEIGHT (DRY) 2,888lbs (1,310kg)

The S6B3 engine is designed for durability, reliability, and efficiency.

Laborde Products is a proud distributor for Mitsubishi Marine Engines and is happy to provide the marine markets with a simple and fully mechanical engine. These engines were constructed with superior engineering to maintain the mechanical nature of its design and a commitment to keeping the power in the US mariners' hands, not the computers.



LOUISIANA
74257 Highway 25
Covington, LA 70435
985-892-0107

TEXAS
313 Deerwood Glen Drive
Deer Park, TX 77536
281-247-8925



labordeproducts.com

S6B3 SERIES

S6B3-Y2MPTK-4

TIER 2 REPLACEMENT
429hp @ 2000rpm

LOAD	Speed [rpm]	Output		Torque		Fuel Consumption	
		[kW]	[hp]	[lb.ft]	[N.m]	[l/h]	[gal/h]
100%	2000	320	429	1127	1528	93	24
87%	1900	277	372	1028	1394	77	20
73%	1800	233	312	912	1236	62	16
61%	1700	195	262	810	1098	51	13
51%	1600	164	219	720	977	43	11
43%	1500	138	184	646	875	36	9
36%	1400	114	152	572	775	30	7
28%	1300	89	119	480	651	23	6

Average Fuel Consumption on ISO 8178 Cycle, Mode E3 : 15.9 gal/h, 60.0 l/h

S6B3-Y3MPTAW-2

TIER 3
429hp @ 1940rpm

LOAD	Speed [rpm]	Output		Torque		Fuel Consumption	
		[kW]	[hp]	[lb.ft]	[N.m]	[l/h]	[gal/h]
100%	1940	320	429	1162	1575	92	24
85%	1840	273	366	1045	1416	75	19
72%	1740	231	310	936	1269	62	16
60%	1640	193	259	829	1125	51	13
50%	1540	160	215	733	994	42	11
41%	1440	130	175	638	865	34	9
33%	1340	105	141	553	749	28	7
26%	1240	84	112	474	643	22	5

Average Fuel Consumption on ISO 8178 Cycle, Mode E3 : 15.9 gal/h, 60.2 l/h

