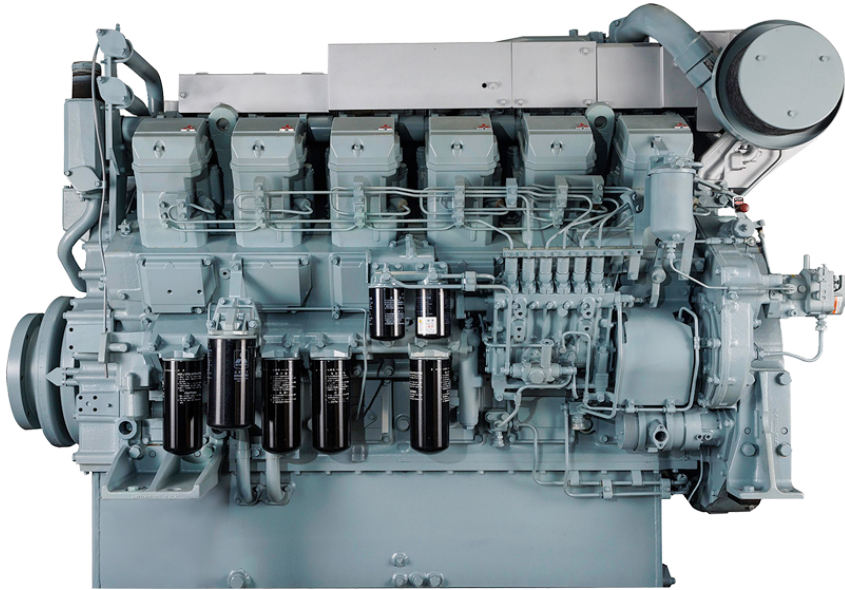


S12R SERIES



12-cylinder, 4-cycle, mechanical controlled, water cooled, turbocharged, direct injection diesel engine

BORE/STROKE 6.7in x 7.1in
(170mm x 180mm)

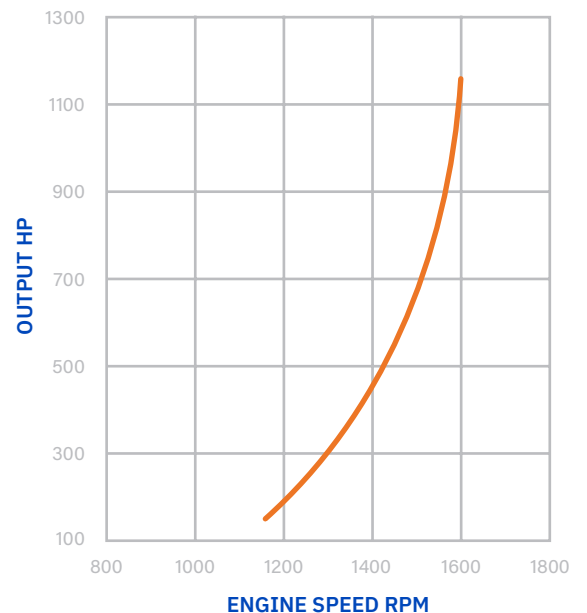
DISPLACEMENT 49L
(2,992 cu in)

DIMENSIONS 93.5in (2,376mm) length
60in (1,512mm) width
68.1in (1,731mm) height

WEIGHT (DRY) 11,729lbs (5,320kg)

The S12R engine is designed for durability, reliability, and efficiency.

Laborde Products is a proud distributor for Mitsubishi Marine Engines and is happy to provide the marine markets with a simple and fully mechanical engine. These engines were constructed with superior engineering to maintain the mechanical nature of its design and a commitment to keeping the power in the US mariners' hands, not the computers.



LOUISIANA
74257 Highway 25
Covington, LA 70435
985-892-0107

TEXAS
313 Deerwood Glen Drive
Deer Park, TX 77536
281-247-8925



labordeproducts.com

S12R SERIES

S12R-Y1MPTA TIER 1 REPLACEMENT 1180 HP @ 1600rpm

LOAD	Speed [rpm]	Output		Torque		Fuel Consumption	
		[kW]	[hp]	[lb.ft]	[N.m]	[l/h]	[gal/h]
100%	1600	880	1180	3874	5252	224	59
82%	1500	725	972	3403	4614	185	48
67%	1400	590	791	2967	4023	151	40
53%	1300	468	628	2537	3440	123	32
38%	1150	333	447	2041	2768	92	24
25%	1008	220	295	1537	2084	64	16

Average Fuel Consumption on ISO 8178 Cycle, Mode E3 : 41.2 gal/h, 156.0 l/h

S12R-Y2MPTK-3 TIER 2 REPLACEMENT 1260 HP @ 1600 RPM

LOAD	Speed [rpm]	Output		Torque		Fuel Consumption	
		[kW]	[hp]	[lb.ft]	[N.m]	[l/h]	[gal/h]
100%	1600	940	1260	4138	5610	252	66
82%	1500	773	1037	3631	4923	200	52
67%	1400	633	849	3186	4320	161	42
54%	1300	503	675	2727	3697	127	33
43%	1200	400	536	2348	3183	101	26
34%	1100	316	424	2023	2743	81	21

Average Fuel Consumption on ISO 8178 Cycle, Mode E3 : 44.3 gal/h, 167.6 l/h

S12R-Y3MPTAW-4 TIER 3 REPLACEMENT 1100hp @ 1600 or 1800

LOAD	Speed [rpm]	Output		Torque		Fuel Consumption	
		[kW]	[hp]	[lb.ft]	[N.m]	[l/h]	[gal/h]
100%	1600	820	1100	3611	4896	221	58
82%	1500	676	906	3172	4301	174	46
67%	1400	550	737	2765	3749	138	36
54%	1300	440	590	2384	3232	110	29
42%	1200	346	464	2031	2753	87	23
32%	1100	266	357	1705	2311	68	18
24%	1000	201	269	1413	1916	51	13

Average Fuel Consumption on ISO 8178 Cycle, Mode E3 : 38.6 gal/h, 146.3 l/h

S12R-Y3MPTAW-3 TIER 3 REPLACEMENT 1260hp @ 1600rpm

LOAD	Speed [rpm]	Output		Torque		Fuel Consumption	
		[kW]	[hp]	[lb.ft]	[N.m]	[l/h]	[gal/h]
100%	1600	940	1260	4138	5610	239	63
83%	1500	776	1041	3646	4943	192	50
67%	1400	632	848	3181	4313	153	40
53%	1300	500	671	2709	3673	120	31
43%	1200	400	536	2348	3183	97	25
34%	1100	315	423	2019	2737	77	20

Average Fuel Consumption on ISO 8178 Cycle, Mode E3 : 42.2 gal/h, 159.7 l/h

